



Dear Summer Session participants,

Greetings from the Center for Global Education and Discovery (CGED)!

We are excited to welcome you to the Sophia Summer Session in East Asian Studies and Japanese Language 2024.

This is a welcome packet that includes useful information for the Summer Session participants. You will also find below information attached:

1. Orientation Info
2. Program Schedule
3. Classroom List
4. List of Course Materials
5. Event Flyer

Further information will be uploaded on the website for Summer Session participants below by the orientation day.

Participant-only website:

<https://piloti.sophia.ac.jp/eng/studyabroad/short-term/after-arrival-for-short-term-program-students-summer-session-2024/>

1. Transcript Mailing Address & Contact in Japan

IMPORTANT

Access to the online application portal by following the email sent by CGED and enter the information below **by Friday, May 31.**

1. Transcript mailing address*

2. Your contact information including your accommodation information in Japan (for any emergency case during the program)

[Participants within the framework of student exchange]

(Payment status: "Exemption of tuition due to the exchange agreement")

Your transcript will be sent to your home university. Please fill in your study abroad coordinator's information including the name of office.

[Other participants]

(Payment status: "Direct payment to Sophia by individual student"/"Other Method")

If you would like us to send your transcript to your home university, please specify the name of the office and person in charge of the receiver.

*An official transcript will be sent by the end of August 2024.

*Make sure to enter the correct address. In case the transcript fails to reach the destination due to any mistake/change in the address provided, handling and postage fee for the second shipment will be covered by the student.

*CGED will not send out your transcript if we do not receive above information from you.

*Some universities may not accept any transcripts submitted by students, so please confirm with your home university beforehand if you need to have the transcript sent to the home university directly.

2. Travel Insurance

All Summer Session participants are automatically covered by Sophia university-sponsored insurance plan during the program period: **June 28 - July 19, 2024**

Detailed information will be uploaded on the website at a later date.

Note: Students who come earlier and stay longer than the Session period in Japan may need to purchase additional insurance for that period as they are covered only during the Session period (June 28, 2024 - July 19, 2024) and it will be at their own risks.

3. Events

As informed, following events will be offered by CGED during the program. Please refer to attached flyers for details.

Event	Date and Time	Fee	Place
Sushi Making Experience	July 5, 10:00a.m.	5,000 yen	"Sushi Making Tokyo", Asakusa
WADAIKO	July 5, 10:30a.m.	10,000 yen	"TAIKO-LAB Aoyama", Aoyama
CHAZEN	July 5, 1:00p.m.	2,000 yen	"Asakusa Chazen", Asakusa
Meiji Shrine Visit	July 5, 1:00p.m.	1,000 yen	"Meiji Shrine", Harajuku
AMEZAIKU	July 5, 1:30p.m.	2,000 yen	"Amezaiku Hanaido branch", Asakusa

- Pre-registration is required.

- Spaces are limited. Participants are accepted on a first come first served basis.

Step 1: **Pre-registration by Friday, May 31th** via Forms.

<https://forms.office.com/r/ay7Tn3rgws>

Step 2: Receive an email from CGED regarding the event you will join.

Step 3: **Pay the participation fee at the orientation on June 28th.**



4. Commuter Pass

Student discount pass is not available due to the short duration of the program, however, you can purchase a regular commuter pass and put it onto your IC card (Pasmo or Suica). The IC card works for subways, buses and Japan Railways.

5. Gym (Training room)

Unfortunately, the gym access is not available to the Summer Session participants on campus. You may search the municipal sports facilities in your neighborhood. Most local authorities operate a training gym or sports center open to the public with admission prices of less than one thousand yen per visit.

6. Textbooks

Please see the List of Course Materials.

East Asian Studies Courses:

The textbook for “First Steps in Japanese”, “Japanese Literature and the City”, and “Chado, the Way of Tea and Japanese Culture” are available at Books Kinokuniya located on the B1F, Bldg. 2. and the purchase is mandatory before the first day of class.

Japanese Language Courses (Intensive Japanese):

The textbooks are available at the Books Kinokuniya located on the B1F, Bldg. 2. Please see the List of Course Materials and purchase the textbooks after the orientation or the counseling session after the first classes on July 1st (see below).

7. Class Level Change

*Only for students taking Japanese language courses (Intensive Japanese)

A counseling session is scheduled on **Monday, July 1 from 3:25p.m. to 4:30p.m. @ Kioi-413** for those who wish to change their class level after the first classes. You can move to another class if both you and the lecturer agree it is better for you.

A Course Level Change Request Form (available at the counseling session) should be submitted by the student to CGED by the deadline after you received approval from the lecturer.

Please note that depend on the lecturer's judgement, you may not be able to move to another level even after the counseling session.

8. Welcome Party

After orientation on the first day, a welcome party will be held at **Student Dining Hall** on the 5th Floor, Bldg.2, starting at 4:00p.m.

9. Transportation

[Access from Narita Airport](#) / [Access from Haneda Airport](#)

[Sophia University Yotsuya Campus Map](#)

[Tokyo Metro Map](#)

[JR Route Map](#)

Finally, here are some tips for Tokyo summer life!

*Since it can extremely hot and humid, be prepared and always carry a drink with you to avoid heat stroke. Also, do not hesitate to use a parasol in town as it is common here in summer.

*Taking a train during rush hour in Tokyo (7-9 am & 5-7 pm) can be quite a shocking experience. To attend the morning class, please make sure to keep good physical condition and take plenty of time to come to university.

We look forward to meeting you soon! Hope you have wonderful experiences in Japan!

Sophia Short-term Program Team

ssprgrm-co@sophia.ac.jp

SUMMER SESSION ORIENTATION

➤ Orientation on June 28, 2024

*Registration will open at 1:00 pm

Please bring and show your passport as proof of your identity.

1:30 pm-3:30 pm Orientation @Auditorium, 1F, Bldg. 6 (6-101)

4:00 pm-4:40 pm Welcome Party @Student Dining Hall, 5F, Bldg. 2

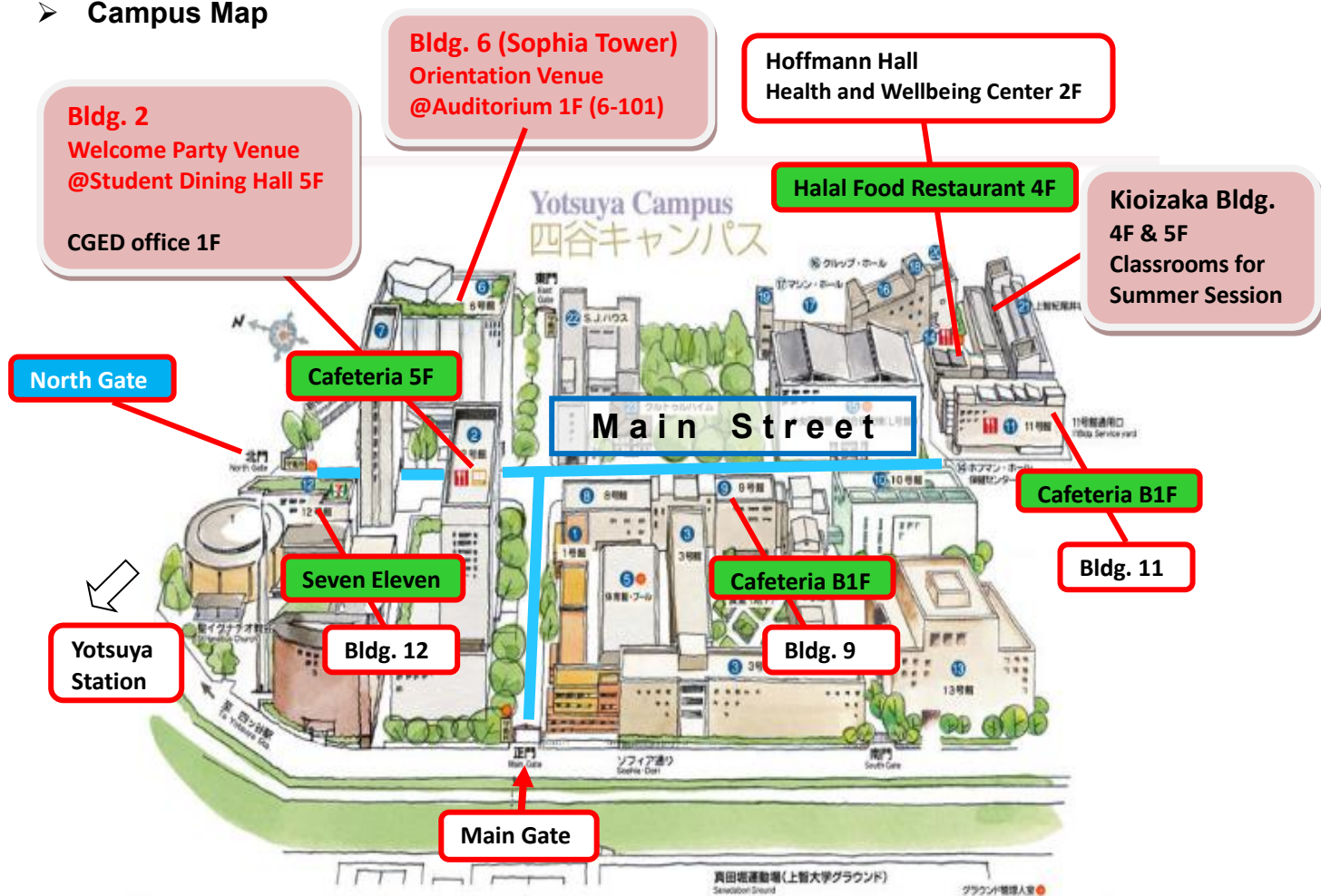
➤ Direction to Yotsuya Campus

[Sophia University Yotsuya Campus Map](#)

5 minutes' walk from Yotsuya Station

(JR Chuo line / Marunouchi subway line / Namboku subway line)

➤ Campus Map



To get to the Bldg. 6, enter through the North Gate and go through under the Bldg. 7. Then you will find the Bldg. 6 on your left.

Program schedule for East Asian Studies

June 28 Fri.		[Orientation] 1:30 pm-3:30 pm @Auditorium, 1F, Bldg. 6 (6-101) [Welcome Party] 4:00 pm-4:40 pm @Student Dining Hall, 5F, Bldg. 2					
July		Period 1 9:00 am-10:40 am	Period 2 10:55 am-12:35 pm	Lunch Break 12:35-1:30 pm	Period 3 1:30 pm-3:10 pm	Period 4 3:25pm-5:05 pm	Events
1	Mon	ENZ200_Kioi-412	LNZ200_Kioi-413 SOZ330_Kioi-504 HSZ200_Kioi-412		SOZ480_Kioi-504 LIZ450_Kioi-415 HUZ200_Kioi-501	SOZ204_Kioi-412	
2	Tue	SOZ440_Kioi-415 JPZ120_Kioi-413 LIZ334_Kioi-504					<u>[Only for students taking East Asian Studies course]</u> Deadline [3:30 pm] for: Course withdrawal without “W”
3	Wed	EDZ200_Kioi-417					
4	Thu	CUZ100_Kioi-501					
5	Fri	No Class Day					Event Day
6	Sat	No Class Day					
7	Sun	No Class Day					
8	Mon	ENZ200_Kioi-412	LNZ200_Kioi-413 SOZ330_Kioi-504 HSZ200_Kioi-412		SOZ480_Kioi-504 LIZ450_Kioi-415 HUZ200_Kioi-501	SOZ204_Kioi-412	
9	Tue	SOZ440_Kioi-415 JPZ120_Kioi-413 LIZ334_Kioi-504					<u>[Only for students taking East Asian Studies course]</u> Deadline [3:30 pm] for: Course Withdrawal with “W”
10	Wed	EDZ200_Kioi-417					
11	Thu						
12	Fri	CUZ100_Kioi-501					
13	Sat	No Class Day					
14	Sun	No Class Day					
15	Mon	ENZ200_Kioi-412	LNZ200_Kioi-413 SOZ330_Kioi-504 HSZ200_Kioi-412			SOZ204_Kioi-412	
16	Tue	SOZ440_Kioi-415					
17	Wed	JPZ120_Kioi-413					
18	Thu	LIZ334_Kioi-504					
19	Fri	EDZ200_Kioi-417 CUZ100_Kioi-501					Farewell Party @Student Dining Hall, 5F, Bldg.2 5:30 pm-6:15 pm

*Schedule and details above are subject to change. "Kioi" is the classrooms in Kioizaka building

Program schedule for Japanese Language

June 28 Fri.		[Orientation] 1:30 pm-3:30 pm @Auditorium, 1F, Bldg. 6 (6-101) [Welcome Party] 4:00 pm-4:40 pm @Student Dining Hall, 5F, Bldg. 2				
July		Period 1 9:00 am-10:40 am	Period 2 10:55 am-12:35 pm	Lunch Break 12:35-1:30 pm	Period 3 1:30 pm-3:10 pm	Events
1	Mon	JPZ118_Kioi-409 JPZ121_Kioi-408	JPZ118_Kioi-409 JPZ121_Kioi-408	Language Buddy Meeting @6-307 12:40 pm-1:10 pm	JPZ118_Kioi-409 JPZ121_Kioi-408	<u>[Only for students taking Intensive Japanese course]</u> Counseling Session @Kioi-413 3:25 pm-4:30 pm
2	Tue	JPZ119_Kioi-407 JPZ216_Kioi-404	JPZ119_Kioi-407 JPZ216_Kioi-404		JPZ119_Kioi-407 JPZ216_Kioi-404	<u>[Only for students taking Intensive Japanese course]</u> Deadline [3:30 pm] for: Class Level Change
3	Wed	JPZ217_Kioi-403	JPZ217_Kioi-403		JPZ217_Kioi-403	
4	Thu					
5	Fri	No Class Day				Event Day
6	Sat	No Class Day				
7	Sun	No Class Day				
8	Mon	JPZ118_Kioi-409	JPZ118_Kioi-409		JPZ118_Kioi-409	
9	Tue	JPZ121_Kioi-408	JPZ121_Kioi-408		JPZ121_Kioi-408	
10	Wed	JPZ119_Kioi-407	JPZ119_Kioi-407		JPZ119_Kioi-407	
11	Thu	JPZ216_Kioi-404	JPZ216_Kioi-404		JPZ216_Kioi-404	
12	Fri	JPZ217_Kioi-403	JPZ217_Kioi-403		JPZ217_Kioi-403	
13	Sat	No Class Day				
14	Sun	No Class Day				
15	Mon	JPZ118_Kioi-409	JPZ118_Kioi-409		JPZ118_Kioi-409	
16	Tue	JPZ121_Kioi-408	JPZ121_Kioi-408		JPZ121_Kioi-408	
17	Wed	JPZ119_Kioi-407	JPZ119_Kioi-407		JPZ119_Kioi-407	
18	Thu	JPZ216_Kioi-404	JPZ216_Kioi-404		JPZ216_Kioi-404	
19	Fri	JPZ217_Kioi-403	JPZ217_Kioi-403		JPZ217_Kioi-403	Farewell Party @Student Dining Hall, 5F, Bldg.2 5:30 pm-6:15 pm

*Schedule and details above are subject to change. "Kioi" is the classrooms in Kioizaka building

Classroom List

All classrooms are in the **Kioizaka Building**.

East Asian Studies Courses

Period	Course No.	Course Title	Lecturer	Room No.*
Period 1 (9:00-10:40)	SOZ440	Contemporary Chinese Society	Prof. PEI	415 (4F)
	JPZ120	First steps in Japanese	Prof. TANAKA	413 (4F)
	LIZ334	Japanese Literature and the City	Prof. FREEDMAN	504 (5F)
	EDZ200	Education in Japan	Prof. AIZAWA Prof. HORIGUCHI Prof. NAKANO Prof. UCHIKOSHI	417(4F)
	ENZ200	Global Sustainability Outlook and Practice in Japan	Prof. HUANG Prof. PUTHENKALAM Prof. TANAKA Prof. ORI Prof. McDONALD Prof. ANNO Prof. SUZUKI Prof. TSUGE Prof. QIAN Prof. NAKAGAWA Prof. PARK Prof. DZIEMINSKA Prof. TOYODA	412 (4F)
	CUZ100	Chado, the Way of Tea and Japanese Culture	Prof. MIYAZAKI Prof. HOSHINA	501 (5F)
Period 2 (10:55-12:35)	HSZ200	Modern History of Japan	Prof. RUSNEAC	412 (4F)
	SOZ330	Japanese Popular Culture	Prof. FREEDMAN	504 (5F)
	LNZ200	Japanese Language and Culture	Prof. TANAKA	413 (4F)
Period 3 (13:30-15:10)	LIZ450	Japanese Theater	Prof. OSHIMA	415 (4F)
	SOZ480	Contemporary Japanese Society	Ronald SALADIN	504 (5F)
	HUZ200	Food and Social Issues in Japanese Literature and Film	Prof. McKNIGHT	501 (5F)
Period 4 (15:25-17:05)	SOZ204	Perspectives in Intercultural Communication: Japanese Communication and Culture	Prof. YAMAMOTO Prof. KAWATANI	412 (4F)

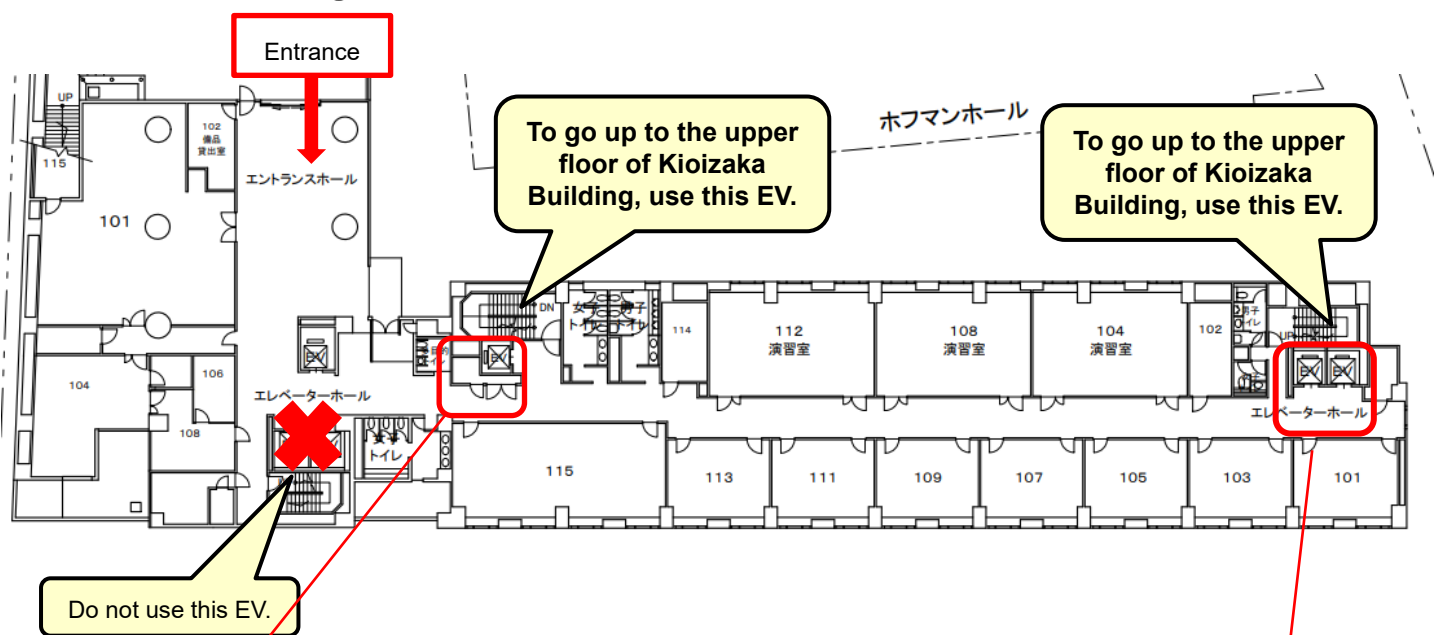
*Classrooms are subject to change.

Japanese Language Courses

Period	Course No.	Course Title	Lecturer	Room No.*
Period 1 (9:00-10:40), & Period 2 (10:55-12:35), & Period 3 (13:30-15:10)	JPZ118	Intensive Japanese 1	Prof. Yamaguchi	409 (4F)
	JPZ121	Intensive Japanese 1.5	Prof. ISHIKAWA Prof. ENDO Prof. SAWANE Prof. YAMAMOTO	408 (4F)
	JPZ119	Intensive Japanese 2	Prof. Nittono	407(4F)
	JPZ216	Intensive Japanese 3	Prof. Naito	404 (4F)
	JPZ217	Intensive Japanese 4	Prof. Mizuno	403 (4F)

*Classrooms are subject to change.

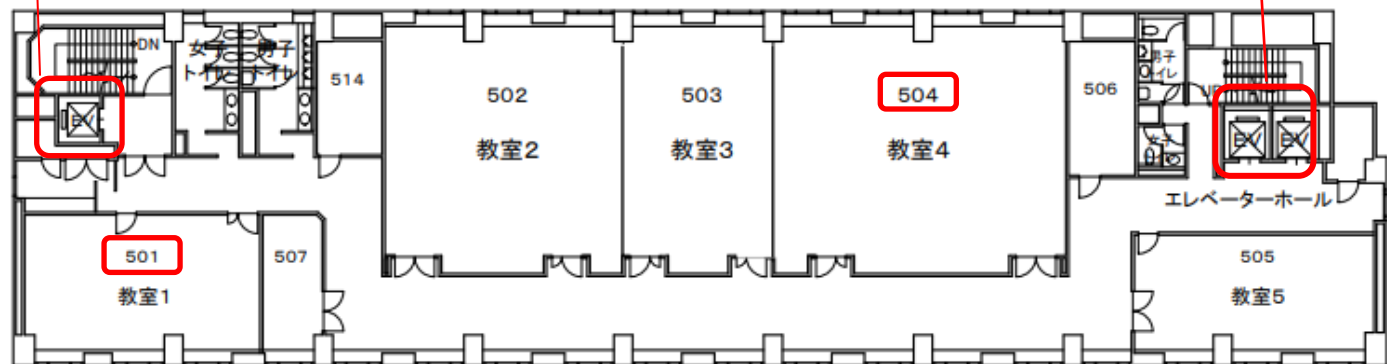
Kioizaka Bldg 1F



Kioizaka Bldg 4F



Kioizaka Bldg 5F



【East Asian Studies】 Summer Session 2024

* Please purchase a textbook at Books Kinokuniya located on B1F, building No. 2 before the first class.

Course Number	Course Title	Textbook	Purchase	e-book	Author	ISBN-13	Publisher	Remarks
JPZ120	First steps in Japanese	Nihongo Daijobu! Book 1: Elementary Japanese through Practical Tasks (きょうから話せる! にほんご だいじょうぶ Book1)	Mandatory	NOT acceptable	Sun Academy NIHONGO Center	978-4789018913 978-4789015899	The Japan Times	
LIZ334	Japanese Literature and the City	Kitchen	Mandatory	Acceptable	Yoshimoto Banana	978-0571342723	Faber & Faber	Readings on Moodle and 1 suggested book (Yoshimoto Banana's Kitchen.)
CUZ100	Chado, the Way of Tea and Japanese Culture	The Book of Chanoyu-Tea...The master key to Japanese culture 『バイリンガル茶の湯 Book—茶の湯は日本文化のマスターキー』 (2019)	Mandatory	Acceptable	Randy Channell Soei	978-4473041470	Tankosha	Reference book: Okakura Kazuo (2018) Book of Tea. Tuttle
		Urasenke Tea Procedure Guidebook 1 Introductory Level-Fundamental Technique 『[英文] 裏千家茶道点前教則 1 入門—割稽古・客の心得』 (2017)	Mandatory	Acceptable	Soshitsu Sen XVI	978-4473041784	Tankosha	

* The purchase of the textbooks for the following course is not mandatoy, but there are textbooks suggested for purchase.

E-book is recommended but a few copies of them are available at Books Kinokuniya at Sophia University.

Course Number	Course Title	Textbook	Purchase	e-book	Author	ISBN-13	Publisher	Remarks
LIZ450	Japanese Theater	Traditional Japanese Theater: An Anthology of Plays	Optional	Acceptable	Karen Brazell ed.	978-0231108737	Columbia University Press	All the readings and Power Points will be posted on Moodle, with larger files like videos posted in different formats. These three textbooks are suggested for purchase.
		A History of East Asia: From the Origins of Civilization to the Twenty-First Century (*e-book only)	Optional	Acceptable	Charles Holcomb	978-1107544895	Cambridge University Press	
		日本美術史 JAPANESE ART HISTORY	Optional	Acceptable	山下裕二・高岸輝 監修	978-4568389074	美術出版社	

* The purchase of the textbooks is NOT NECESSARY for the following courses.

Course Number	Course Title	Course Materials
ENZ200	Global Sustainability Outlook and Practice in Japan	Readings will be available on Moodle or distributed during classes.
SOZ440	Contemporary Chinese Society	The course materials will include selected video clips and readings, carefully chosen to complement the topics covered in the class and provide students with a comprehensive understanding of the subject matter
EDZ200	Education in Japan	We do not assign a textbook for the whole course. All class material –recommended readings – will be uploaded on Moodle. The references below will be helpful for further understanding of the topics covered in this course. - Yoshio Sugimoto. 2021. An Introduction to Japanese Society (5th edition). Cambridge: Cambridge University Press. - Akiyoshi Yonezawa et al. (eds.) 2018. Education in Japan in a Global Age: Sociological Reflections and Future Directions. Springer.
LNZ200	Japanese Language and Culture	Reading materials will be available on MOODLE.
SOZ330	Japanese Popular Culture	PDFs, video essays, and other materials on Moodle, suggested textbook.
HSZ200	Modern History of Japan	All class material – mandatory and optional readings – will be uploaded on Moodle. The main text for the course is Andrew Gordon's A Modern History of Japan from Tokugawa Times to the Present, 3rd edition 2014 (ISBN: 9780199930159); 4th edition 2019 (ISBN:9780190920555); International edition, 2020 (ISBN: 9780197507339)
SOZ480	Contemporary Japanese Society	Texts will be made available via moodle.
HUZ200	Food and Social Issues in Japanese Literature and Film	Texts will be posted on Moodle; reading the relevant texts before class meets is mandatory.
SOZ204	Perspectives in Intercultural Communication: Japanese Communication and Culture	Intercultural Communication Culture Specific—Working Effectively with the Japanese. By Kikue Yamamoto, Inlingua International Ltd., 2011. To be provided in class. Five hundred yen per copy.

【Japanese Language】 Summer Session 2024

*Please purchase textbooks and workbooks AFTER the first day of your class (as there is a chance that you change your course level on the first day after attending the class).

The books can be purchased at Books Kinokuniya located on B1F, Building No. 2 (or online only if the e-book status is "acceptable").

Course Number	Course Title	Textbook/Workbook	Purchase	e-book	Author	ISBN-13	Publisher	Remarks
JPZ118	Intensive Japanese 1	Genki 1: An Integrated Course in Elementary Japanese I [3rd Edition]	Mandatory	Acceptable*	Eri Banno et al.	978-4789017305	The Japan Times	*e-book is acceptable but the paper version is strongly recommended.
		Genki 1: An Integrated Course in Elementary Japanese I Workbook [3rd Edition]	Optional	-	Eri Banno et al.	978-4789017312	The Japan Times	Workbook will not be used in class.
JPZ121	Intensive Japanese 1.5	①Genki 1: An Integrated Course in Elementary Japanese I [3rd Edition] ②Genki 2: An Integrated Course in Elementary Japanese II [3rd Edition]	Mandatory	Acceptable*	Eri Banno et al.	①978-4789017305 ②978-4789017329	The Japan Times	*e-book is acceptable but the paper version is strongly recommended.
		①Genki 1: An Integrated Course in Elementary Japanese I Workbook [3rd Edition] ②Genki 2: An Integrated Course in Elementary Japanese II Workbook [3rd Edition]	Mandatory	NOT acceptable	Eri Banno et al.	①978-4789017312 ②978-4789017336	The Japan Times	
JPZ119	Intensive Japanese 2	Genki 2: An Integrated Course in Elementary Japanese II [3rd Edition]	Mandatory	Acceptable*	Eri Banno et al.	978-4789017329	The Japan Times	*e-book is acceptable but the paper version is strongly recommended. In addition to the textbooks, we recommend that you keep the numerous handouts for this course in a 3-ring binder.
		Genki 2: An Integrated Course in Elementary Japanese II Workbook [3rd Edition]	Mandatory	NOT acceptable	Eri Banno et al.	978-4789017336	The Japan Times	
JPZ216	Intensive Japanese 3	中級の日本語	Mandatory	Acceptable	三浦昭 マグロイン花岡直美	978-4789018838 (旧:978-4789013079)	The Japan Times	このコースでは、5～10課を勉強します。
		中級の日本語 ワークブック	Mandatory	Acceptable	三浦昭 マグロイン花岡直美	978-4789013086	The Japan Times	
JPZ217	Intensive Japanese 4	生きた素材で学ぶ 新・中級から上級への日本語	Mandatory	Acceptable*	鎌田修 他	978-4789014625	The Japan Times	*e-book is acceptable but the paper version is strongly recommended. この他に生教材（新聞、インターネットの記事、視聴覚材など）をMoodleに載せたり、授業の時に渡します。



Amezaiku Making Experience

Amezaiku is one of the traditional arts crafts in Japan. You can create a rabbit formed edible candy in this event.

- Date: Friday, July 5th , 2024
- Time: 01:30 p.m.-03:30 p.m.
- Place: Asakusa Amezaiku Ameshin - Hanakawado

(1F Hori bldg. 2-9-1 Hanakawado, Taito-ku, Tokyo, 111-0033)

- Attendance Fee: 2,000 yen

*The number of participants will be limited to 20 people maximum.

(The participation fee over 2,000 yen will be subsidized by Sophia University.)

- Schedule (Subject to change)

★Make sure to bring your Student ID Card with you!

(01:00 p.m.)	(Arrived at Asakusa station around 01:00 p.m.)
01:15 p.m.	Meet at “Amezaiku Ameshin- Hanakawado” (1F Hori bldg. 2-9-1 Hanakawado, Taito-ku, Tokyo, 111-0033)
01:30 p.m.	Confirmation of the registration at the reception of “Amezaiku Ameshin- Hanakawado”
01:30 p.m.	Amezaiku experience starts!
03:30 p.m.	Dismissed on the site

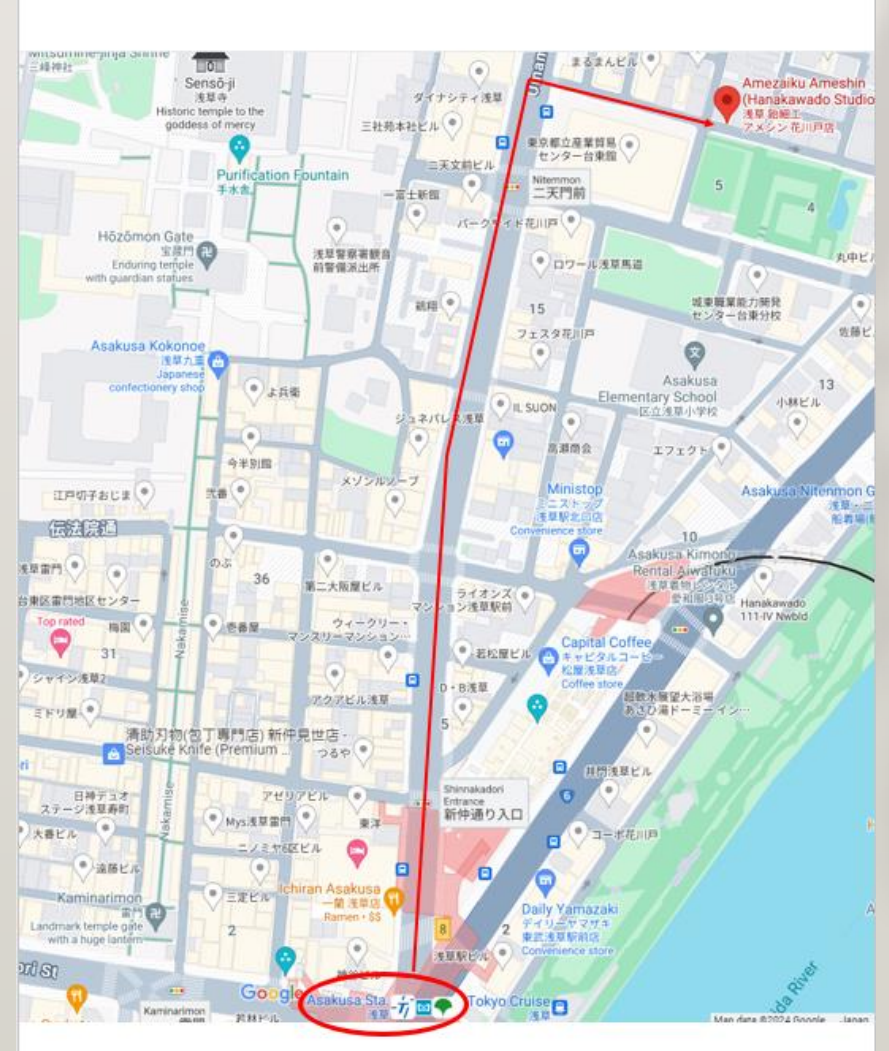
- Public Transformation Information

Asakusa (Ginza Line, Toei-Asakusa Line, Tobu Line): Exit via 8.
7-minute walk

- Reference Information

Amezaiku Ameshin. <http://www.ame-shin.com/workshop-en/>

*Please come to the venue directly from your home. The day on July 5th is No class day.



CHAZEN (Traditional Tea Ceremony Experience)

Date: July 5th (Fri.), 2024

Time: 1:00 - 2:00 pm

Place: Asakusa

Tea house “Chazen” (BENKYODO blgd.5F, 1-4-7, Asakusa, Taito-ku, Tokyo)

Attendance Fee: 2,000 yen

*The number of participants will be limited to 20 people maximum.

(The participation fee over 2,000 yen will be subsidized by Sophia university.)



You will participate in the Japanese traditional tea ceremony “Sado (茶道)”, in which a host prepares and offers tea according to a Sado manner. You can experience the beauty of a genuine tea ceremony in a traditional and authentic tea room (chashitsu) in Asakusa.

- You can learn about the history of Japanese tea ceremony in a short introductory lecture.
- You will participate in a demonstration by your experienced tea ceremony instructor and enjoy your matcha with Japanese traditional sweets.

Event Schedule*

12:50 pm	Meet at “Chazen” Asakusa. Meeting point: “Chazen” Asakusa (茶禅 Asakusa) BENKYODO blgd.5F, 1-4-7,Asakusa,Taito-ku,Tokyo JAPAN
1:00 pm	Tea ceremony starts
2:00 pm	Dismissed on the site

*Subject to change

Dress Code

- Wear or bring socks; entering a tea house barefoot is prohibited.
- Late comers are not allowed to attend the event.

Note

- Bring your student ID card on July 5th.
- Please come to the venue directly from your home. The day on July 5th is No Class day.

Public Transport Information

You can access Asakusa by train (Subway or Private railway).

Subway

Ginza Line : 3 minutes walk from Asakusa Station No.1 Exit

Toei Asakusa Line : 3 minutes walk from Asakusa Station A4 Exit

Private Railway

Tobu Railway: 5 minutes walk from Asakusa Station Central Exit

Tsukuba Express : 5 minutes walk from Asakusa Station A1 Exit

※About 2 minutes walk from Asakusa Kaminarimon

Reference information

Chazen Asakusa Home page: <https://teaceremony-tokyo.jp/asakusa/>

Map



The building looks like and climb up to 5th floor





Meiji Shrine Visit



Date: July 5th (Fri.), 2024

Time: 1:00 - 3:00 pm

Place: Meiji Shrine

Attendance Fee: 1,000 yen

The number of participants will be limited to 30 people.

Meiji Shrine <https://www.meijijingu.or.jp/en/>

You will participate in the Kigansai (祈願祭), a special ceremony whose aim is to make wishes, which may include prayers or expression of gratitude. As a part of it, traditional ritual dances and music will be performed.

Event Schedule*

12:45 pm	Meeting point: Meiji Shrine Harajukuguchi (Harajuku Entrance)
1:00 pm	Guide tour on Meiji Shrine
1:40 pm	<u>Main Shrine</u> (本殿) (Refer to the Precinct map)
1:45 pm	Watching film and lecture (30min)
2:30 pm	Kigansai (prayer dance & music) at Kagura-den (神楽殿)
3:00 pm	Dismissed on the site

*Subject to change

Dress Code

- Refrain from attending with sandals or jeans.
- Do not expose your shoulders or thighs, make sure not to wear tank tops, camisoles or short pants.
- Wear or bring socks; entering Kagura-den barefoot is prohibited.

Note

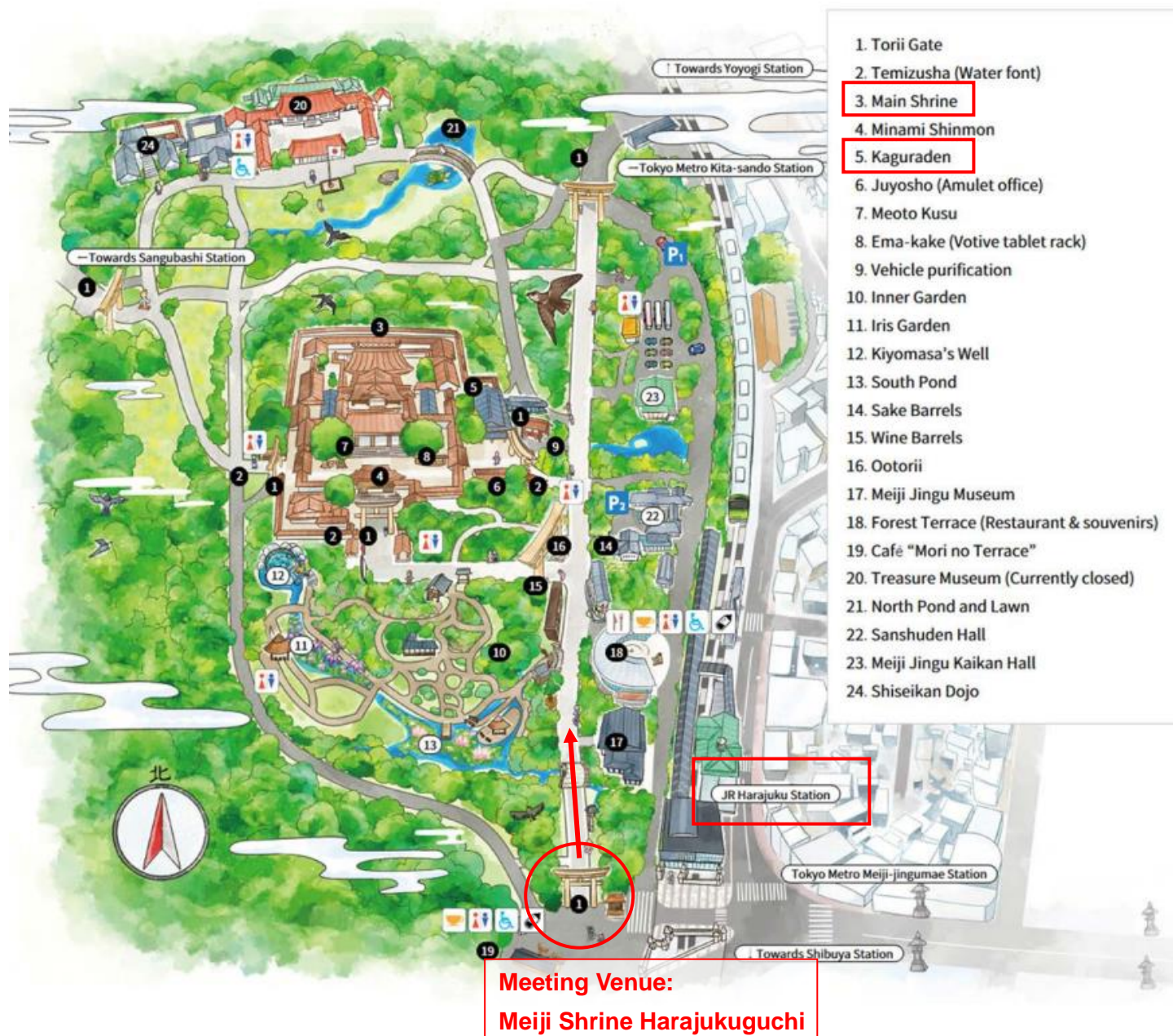
- Please bring your student ID card.
- Late comers are not allowed to attend the event.



Meiji Shrine

1-1, Yoyogi-kamizono-cho, Shibuya-ku, Tokyo

Tel : 03-3379-5511





SUSHI MAKING EXPERIENCE

Date: Friday, July 5th, 2024

Time: 10:00 a.m.-12:00 p.m.

Place: Asakusa. Sushi Making Tokyo
(2-1-13 Kaminarimon, Taito-Ku, Tokyo)

Attendance Fee: 5,000 yen

*The number of participants will be limited to 20 people maximum.

(The participation fee over 5,000 yen will be subsidized by Sophia university.)

In this event, you will enjoy making and eating Temari-Sushi!

*Temari-Sushi is a type of Sushi, which looks like a ball and is smaller and cuter than one you might imagine as typical Sushi.

Event Schedule (Subject to change) ★Make sure to bring your STUDENT ID CARD with you!

9:50 a.m.	Meet at “Sushi Making Tokyo”, Asakusa. Meeting point: 2-1-13 Kaminarimon, Taito-Ku, Tokyo. (5F)
10:00 a.m.	Sushi making starts
12:00 p.m.	Dismissed on the site

Public Transport Information

Tokyo Metro Ginza Line Asakusa Station 1-minute walk. (No.4 Exit)

Toei Asakusa Line Asakusa Station 3-minute walk. (A5 Exit)

From the Burger King at the Azumabashi intersection, proceed 20m toward Azumabashi.

Turn right at the street where Gonpachi is in front of you and walk about 30m.

Please check the sign on the building and take the elevator to the 5th floor.

Reference Information

Sushi Making Tokyo Websites: <https://washoku.site/cookingclass/>



WADAIKO (Japanese Drums)

Performance & Experience!

Date: July 5th (Fri.), 2024

Time: 10:30-11:30 am

Place: Taiko-Lab Aoyama

Attendance Fee: 10,000 yen

(The participation fee over 10,000 yen will be subsidized by Sophia university.)



Have you ever tried Japanese Taiko drums? It is a simple and exciting exercise, and it is guaranteed to help get rid of all your stress.

Session Schedule

- 10:20 am Meet at TAIKO-LAB Aoyama
- 10:30 am Session begins!
 - Basic lesson (5 minutes)
 - Introduction of the instructor and WADAIKO
 - Lesson-Basic practice with everyone! (45 minutes)
- 11:20 am Presentation (5 minutes)
- 11:25 am Enjoy performance by professional Taiko players
- 11:30 am Participants are dismissed.

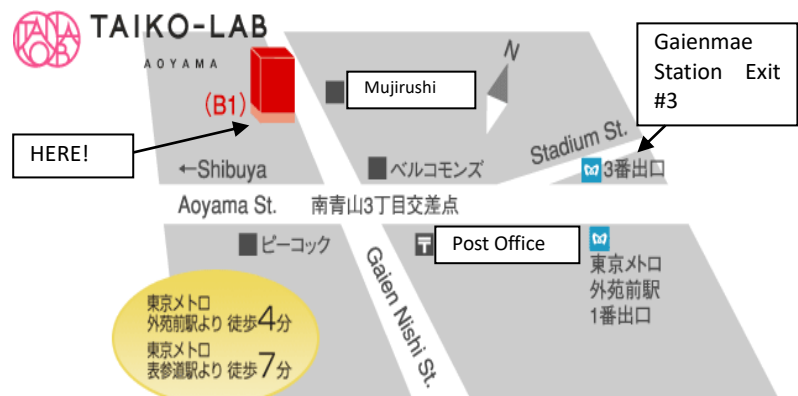
*Subject to change

Note: Please bring your student ID card.

Seats are limited to 20!
Sign-up is accepted
on a first-come,
first-served basis

Direction to TAIKO LAB Aoyama

- Tokyo Metro Ginza Line Gaenmae station 4 minutes by walking
- Tokyo Metro Ginza/ Hanzomon/ Chiyoda Line Omotesando station 7 minutes by walking



Address: 1st Basement Level, Concept Aoyama Bldg.

3-1-30 Jingumae, Shibuya-ku, Tokyo

Tel: 0120-979-447